



Mark Your Calendar

- 2/2 Ledo's Spirit Night; Gianni's Fund-raiser Pick-up 4:30-6pm in Gym
- 2/3 Hands On Science Begins
- 2/4 Valentine Flower Grams Deadline
- 2/5 No School
- 2/9 PTA Meeting
- 2/12 Valentine Grams Delivered
- 2/15 No School
- 2/18 Papa John's Spirit Night
- 2/19 BoxTops deadline
- 2/26 Basketball Challenge (Staff vs 5th Grad)
- 3/3-18 MSA testing
- 3/24 PTA Reading Logs & Square1 Art Orders Due
- 3/26 2 Hr Early Dismissal; Tysons Labels Deadline
- 3/29-4/5 Spring Recess

PTA Executive Board

- President**
Tracy Fiore, 410.495.8139
- Vice President**
Lara Gladhill, 410.586.9252
- Secretary**
Wendy Miller, 410.495.7694
- Treasurer**
Kevin Frere, 410.586.1623
- CCC PTA Rep**
Sheila Pitcher, 410.586.1421
- MES Administration**
Lisa Wisniewski, Principal
Summer Cox, Vice Principal
410.535.7700
- Teacher Rep**
Carol Chang-Savoy, Counselor
410.535.7700

Mutual Matters

Mutual PTA Newsletter

www.mutualpta.com

February 2010



B-I-N-G-O, B-I-N-G-O, B-I-N-G-O...AND THAT'S THE GAME WE'LL PLAY-O!

Announcing our Spring fundraiser.....Old Fashioned Family Bingo Night! Get ready to scream "BINGO" for baskets! On April 9, we are going to host an old-fashioned style Bingo night with great baskets donated by each Mutual class for the prizes. Snack and drink items will be available for purchase, as well as various raffles. And, the drawing for 'THE BEST RAFFLE EVER' will be held that night and the winner will choose their prize! Look in this issue of the newsletter for information about this event and keep an eye open for flyers and sign-up sheets coming home.

Also on our calendar for upcoming events is the 5th Grade Students v/s Staff Basketball Game on Feb. 26th from 6-8pm at Southern Middle School. Come out to support your 5th grade friends as well as teachers for this fun event. Bring cash for a 50/50 raffle as well as a bake sale.

As always, we want to thank you for all your support for our PTA. Because of you, we are able to provide our MES students with wonderful events, school supplies and learning tools. We have developed a chart to explain where the PTA funds are spent this year. If you have any questions or concerns, please feel free to call me, Tracy Fiore, at 410-495-8139 or email at tfiore1@verizon.net.

Because of our fundraising efforts, we have been able to hold numerous family events as well as school wide cultural arts performances; some partially covered by grants we have received, written by our Cultural Arts Chairpersons, Lisa Reid-Ragan and Elleen Kane. With their help in scheduling the events and securing grant money, we are able to introduce our children to a wide array of artistic performances.

Everyone have a great February, stay warm and enjoy the upcoming snow days!

MES PTA Board

Through Mutual's generous support and participation, our Relay For Life team earned \$1600 from the Festival of Mini Trees.

Thank you to all those who donated items for the beautifully decorated trees & to the room parents & volunteers who decorated them.



PTA MEETING

Parents and children are invited to our next General PTA Meeting on Tuesday, Feb. 9th at 7PM in the cafeteria. Our January Mighty Mustang of the Month students will be acknowledged and you can learn about upcoming school events as well as enjoy refreshments while meeting other students, parents and faculty. We hope to see you there!



READING INCENTIVE PROGRAM

The Third Quarter logs are due March 24th! Until the KEEP READING!
Reading log forms are available at www.mutualpta.com under the 'Parent Resources' link.



We Appreciate...

- * Our Holiday Shop volunteers and patrons! Thanks for making this activity such a success for so many students!
- * Our Room Parents who have coordinated our Fall & Winter celebration parties!
- * Everyone who supported our 5th grade class by participating in the Gianni's Fundraiser!
- * Our many Mutual families that have taken time to clip out Boxtops and Campbell's Soup labels & other Labels for Education! Thanks for your diligence which earns free money to benefit Mutual students & staff!

Winter Hands On Science

Winter HOS is scheduled for Wednesdays from February 3rd - March 24th. Please remember that if school is closed early due to weather conditions, HOS will be cancelled for that day and made up the next available Wednesday.

Classes this session include Dive Into Dimensions (architecture and engineering) for pre-K, K and 1st grade, Hot Stuff (Solar Energy) for grades 2 and 3, and Hawaii's Volcanoes for grades 4 and 5. If you have any questions please contact the HOS Coordinator, Tracey Williams (williams301@yahoo.com).

Basketball Challenge

MES Staff vs. 5th Graders

WHERE: Southern Middle School Gym

WHEN: FEB 26TH ~ 6:00 to 8:00pm

Admission price ~ \$2.00 for children 4 & up
\$3.00 for adults



Put your SPIRITWEAR on and bring your whole family for an ENTERTAINING EVENING!

Baked Goods & Drinks Available For Purchase!

50/50 Raffle!

We appreciate your participation & support!

Don't Forget ~ Mutual Recycles

Printer Cartridges, Cell Phones & Newspapers!

We earn cash rewards for our efforts!

For more information about MES Recycling, please contact Kathy Brennan at 410-586-8476.



Fundraisers

Square1 Art

We've teamed up with Square 1 Art again to bring you quality products designed from your child's artwork! Our students are working on their pictures in art class and their best work will be sent to the company on Feb. 25th.

Packets will be sent home for your review in early March. Each child will receive a free sticker featuring their artwork to keep. The deadline for orders to be turned into school will be Mar. 24th & your child's artistic designs will be here in April. Questions? Please contact Mary Miller at 410-586-9190.

If you would like to preview the catalog, please go to www.mutualpta.com/fundraisers.



Ways & Means

Box Tops Contest

Help us build a well-dressed snowman by sending in your boxtops by February 19th. The class who collects the most boxtops will get a special treat! Keep an eye on our progress by checking out our PTA snowman near the cafeteria. Use the snowman collection sheets available at www.mutualpta.com OR send them in a baggie labeled with Teacher/Grade.



Tyson's Project A+ Contest

Get ready to send in the labels from over 50 Tyson Frozen Chicken bags or boxed items! Superbowl is almost here & Tyson's has great products for hungry fans—just don't forget to clip those labels to send in to Mutual! Start collecting them now for our March contest!!



Labels For Education Contest Results

Congratulations to Mrs. LeDonne's class for bringing in the most Campbell's Labels for Education in our December contest—a total of 237!!

Total labels collected 2,394—Great job, Mustangs!

We appreciate your participation & support!



Old-Fashioned Family Basket Bingo Night

Save Friday, April 9th for a night of family FUN!!

6-9pm in the MES Gym

EARLY BIRDS ~ 5:30pm



The Best Raffle Ever!

Winner Chooses (1) Prize:

Wii FIT PLUS Bundle & \$100 Game Stop Card!

DSI & \$50 Game Stop Gift Card!

8GB IPOD NANO & \$50 iTunes Gift Card!

BEATLES ROCKBAND for system of your choice!

NETBOOK Computer

Flip Ultra Camcorder & rechargeable battery pack & \$50 Best Buy Gift Card

Kindle E-book Reader

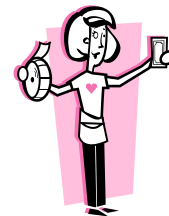
Raffles Galore!

OVER 20 THEMED BASKETS
CREATED BY MUTUAL CLASSES!!



Refreshments will be available for purchase.

We appreciate your participation & support!



MES PTA PRESENTS... The Best Raffle of ALL TIME!!

WINNER *CHOOSES* THE PRIZE!

CHOICE OF (1):

Wii FIT PLUS Bundle & \$100 Game Stop Card!

Nintendo DSi & \$50 Game Stop Gift Card!

8GB IPOD NANO & \$50 iTunes Gift Card!

BEATLES ROCKBAND for system of your choice!

NETBOOK Computer!

Flip Ultra Camcorder (w/rechargeable battery pack) & \$50 Best Buy Gift Card!

Kindle E-Book Reader!

Tickets on sale now thru April 9th

\$1 = 1 ticket \$5 = 6 tickets \$10 = 15 tickets

DRAWING IS ON 4/9/10 AT OUR BASKET BINGO FAMILY EVENT!

All Proceeds To Benefit MES Students!! Please make checks payable to MES PTA. Ticket Stubs WILL NOT be sent home.

You will receive a receipt of purchase. Need NOT be present to win.

Questions: Contact Shannon Kwiatkoski: skwiat73@gmail.com, or Heather Wright: hunter_wright@msn.com

Name on Ticket _____ Phone # _____


Number of Tickets _____ Amount Paid \$ _____

Child _____ Teacher _____

Name on Ticket _____ Phone # _____

Number of Tickets _____ Amount Paid \$ _____

Child _____ Teacher _____



Keeping you informed with the Mustang Minute

The MES PTA knows that family life is hectic and we know that it's much easier to stay involved when you're informed. The Mustang Minute is a once-a-month short email reminder listing upcoming events at Mutual. If you'd like to be added to our growing list of subscribers, please complete the information below and return it to school, ATTN: Linda Ward

Be Informed ~ Stay Involved

Yes, I'd like to receive the *Mustang Minute*.

Name _____ Email address 1 _____

Name _____ Email address 2 _____

Don't forget to update your SPAM settings to allow for emails from information@mutualpta.com to be received.

Cultural Arts

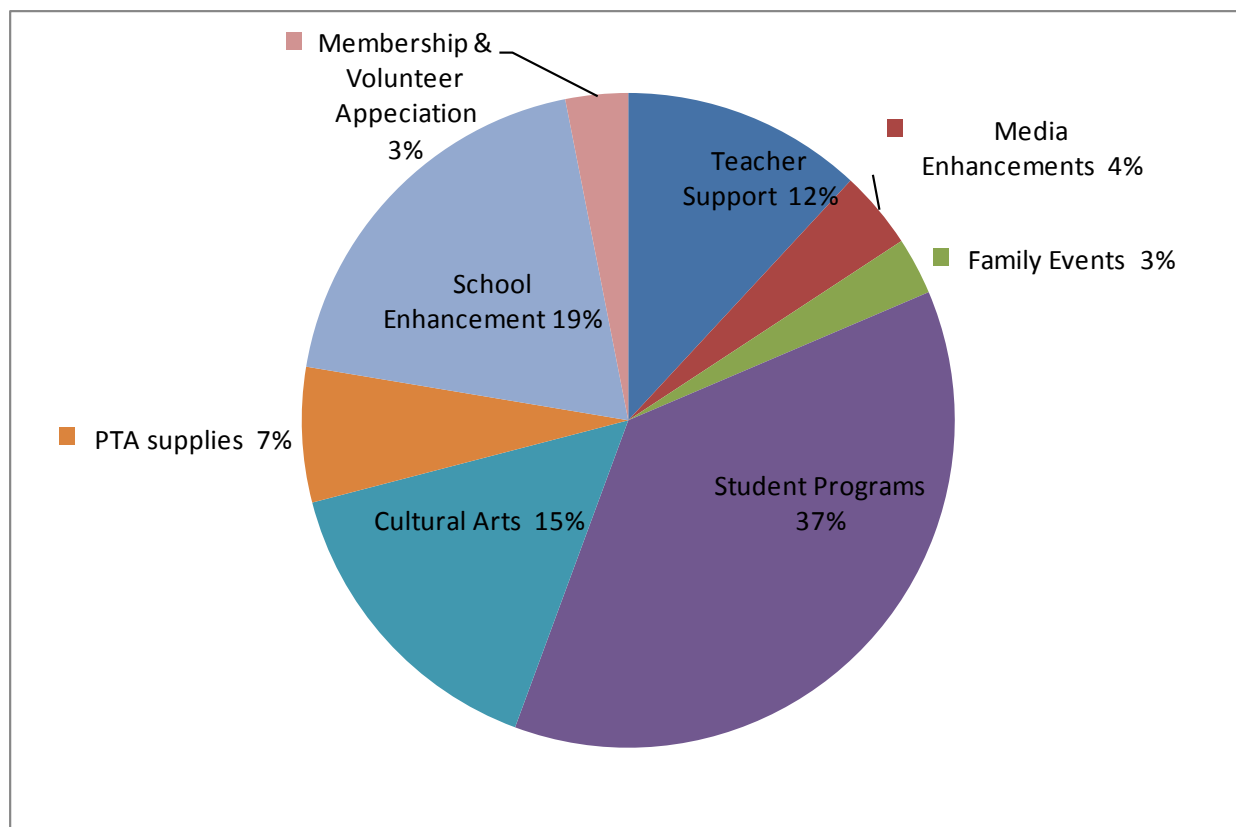
On January 7th, the group Taikoza, a Japanese Drumming and Dance troupe, performed for our students. They used huge Taiko drums, as well as Japanese flutes, costumes and dance in their assembly. They were loud, but entertaining, and the students learned about the language, culture and practices of Japan. Some of our Mutual students had a chance to try out the huge Taiko drums and perform for their classmates.



Old-Fashioned Family Bingo Theme Baskets

We need your help in creating our CLASS THEME BASKETS!! Room parents are sending out requests for donated items or monetary donations to help fill the the basket for your child's class!

We appreciate your participation & support!



How PTA Funds Are Budgeted for 2009-2010

Our PTA provides so much for our incredible school, staff, and students and it's all thanks to the support of families like yours! This pie chart provides a breakdown of how we plan to spend funds for this school year. Please note: School Enhancements includes last year's purchases of a Smartboard, a Senteo System (used w/smartboards), a trophy case, hand radios & landscaping. Student Programs includes field trips, After School Clubs/HOS Club, Fun Day treats, Character Education, Reading Incentives, School-wide Writing Project, Academic & 5th Grade t-shirts, Celebration stipend, & Student Planners. Family Events includes Movie Night, Fall Carnival, and Book Fairs.

We appreciate your participation & support!